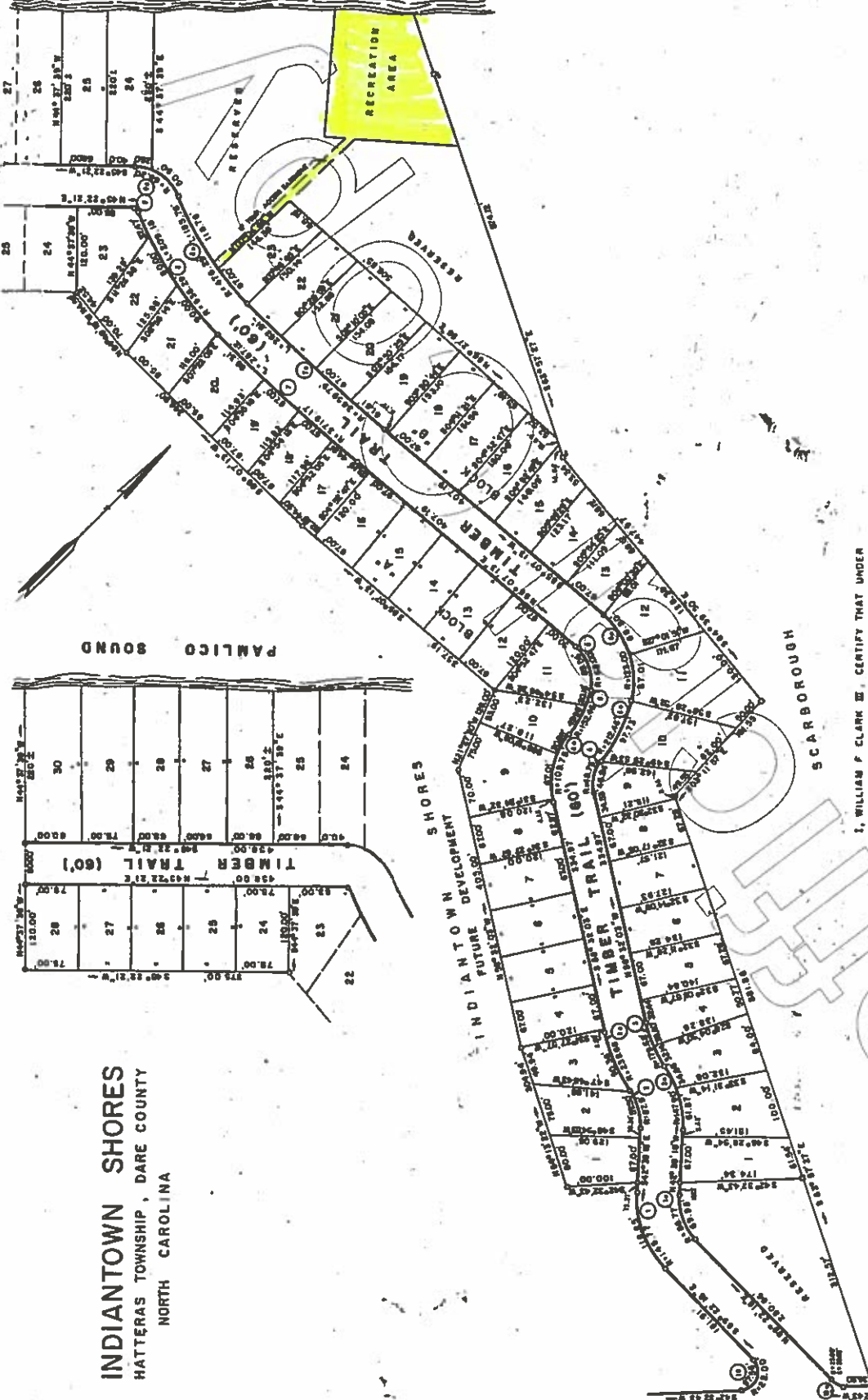
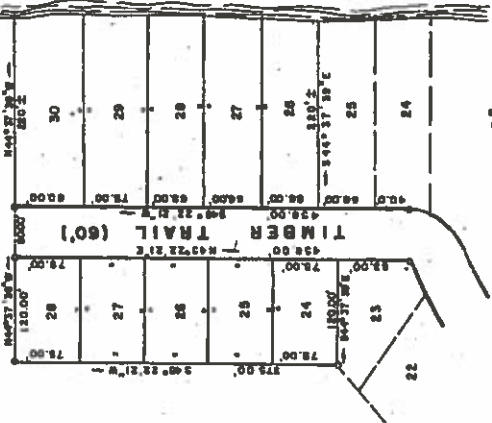


9.00pt 7.12.12 1.30pt

INDIANTOWN SHORES
 HATTERAS TOWNSHIP, DARE COUNTY
 NORTH CAROLINA



NO.	RADIUS	DELTA	TANGENT	ARC
1	10.17	20°43'07"	3.50	11.87
2	10.17	20°43'07"	3.50	11.87
3	10.17	20°43'07"	3.50	11.87
4	10.17	20°43'07"	3.50	11.87
5	10.17	20°43'07"	3.50	11.87
6	10.17	20°43'07"	3.50	11.87
7	10.17	20°43'07"	3.50	11.87
8	10.17	20°43'07"	3.50	11.87
9	10.17	20°43'07"	3.50	11.87
10	10.17	20°43'07"	3.50	11.87
11	10.17	20°43'07"	3.50	11.87
12	10.17	20°43'07"	3.50	11.87
13	10.17	20°43'07"	3.50	11.87
14	10.17	20°43'07"	3.50	11.87
15	10.17	20°43'07"	3.50	11.87
16	10.17	20°43'07"	3.50	11.87
17	10.17	20°43'07"	3.50	11.87
18	10.17	20°43'07"	3.50	11.87
19	10.17	20°43'07"	3.50	11.87
20	10.17	20°43'07"	3.50	11.87
21	10.17	20°43'07"	3.50	11.87
22	10.17	20°43'07"	3.50	11.87
23	10.17	20°43'07"	3.50	11.87
24	10.17	20°43'07"	3.50	11.87
25	10.17	20°43'07"	3.50	11.87
26	10.17	20°43'07"	3.50	11.87
27	10.17	20°43'07"	3.50	11.87
28	10.17	20°43'07"	3.50	11.87
29	10.17	20°43'07"	3.50	11.87
30	10.17	20°43'07"	3.50	11.87

I, WILLIAM F. CLARK III, CERTIFY THAT UNDER MY DIRECTION AND SUPERVISION THIS PLAN WAS DRAWN FROM AN ACTUAL FIELD LAND SURVEY, THAT THE ERROR OF CLOSURE AS CALCULATED BY LATITUDES AND DEPARTURES IS 0.0000 FEET. THE AREA IS DETERMINED BY THE D.M.D. METHOD THAT THIS PLAN WAS PREPARED IN ACCORDANCE WITH 88-47-30 AS AMENDED.

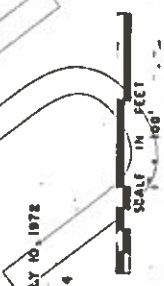
WITNESSES MY HAND AND SEAL AT MANTOE, N.C. THIS 10th DAY OF JULY, 1978.

OF *William F. Clark III*
 REG. LAND SURVEYOR 2868

WILLIAM F. CLARK III
 LAND SURVEYOR
 NCL-1266 VA1017 SC3719 GA1638
 MANTEO, NORTH CAROLINA

DATE: JULY 10, 1978
 J.N. 804

SUBSCRIBED AND SWORN BEFORE ME THIS 10th DAY OF JULY, 1978
 NOTARY PUBLIC *John F. Clark*
 MY COMMISSION EXPIRES JULY 7, 1976



N. C. NO. 12